

LES **SHOWROOMS**
DU **MARAIS**

GALERIE BOUTIQUE TURENNE

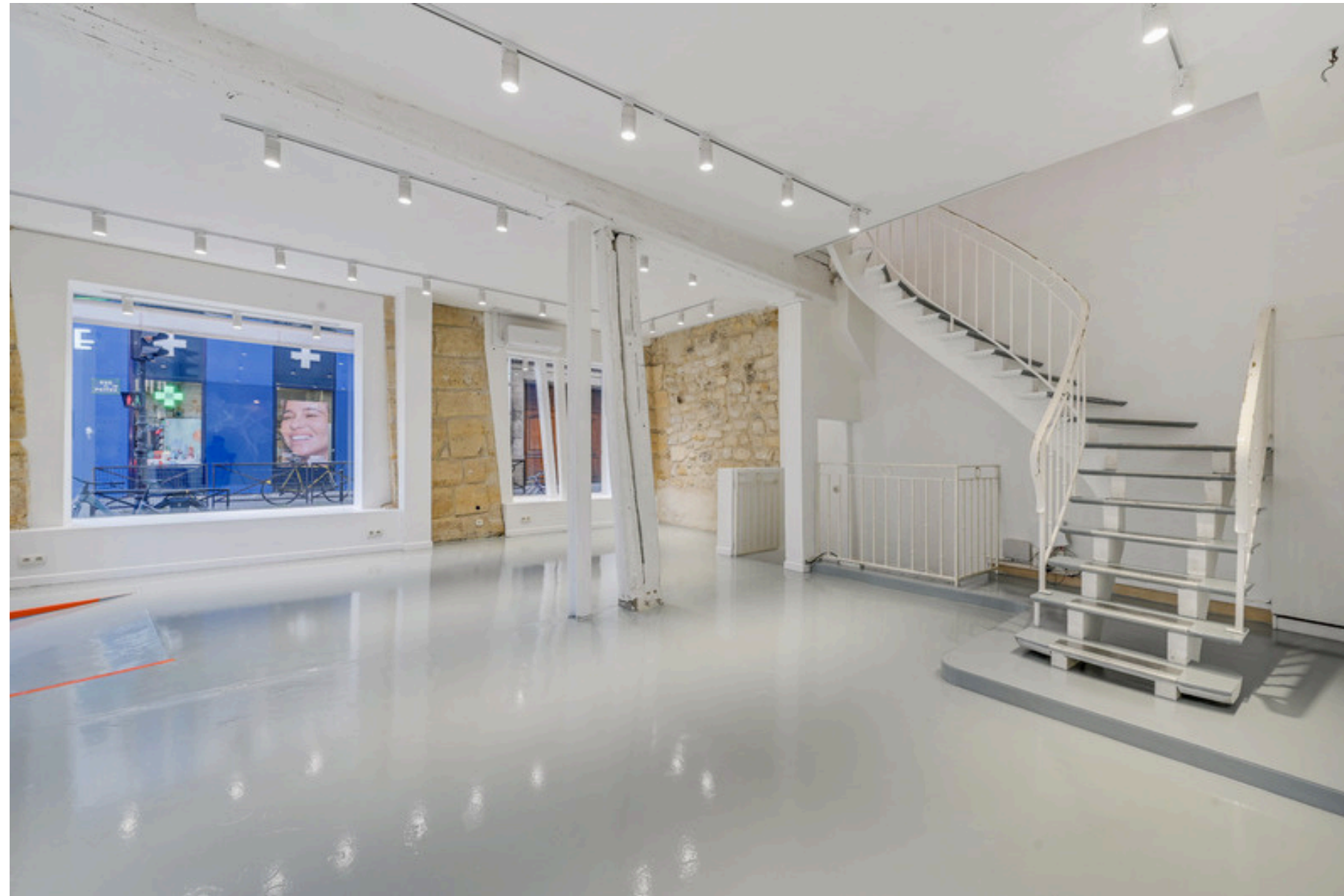
97 RUE DE TURENNE, 75003 PARIS

LES SHOWROOMS DU MARAIS

This former 19th-century shop housed clothing wholesalers for many years until it was taken over and renovated in 2013 by Galerie À Demain, specializing in 20th-century design.

This boutique-gallery is located at the strategic corner of Rue de Turenne, Rue de Poitou, Rue du Pont-aux-Choux, and Rue Communes/Oberkampf, a key passage for residents of the 11th arrondissement, users of the Saint-Sébastien metro, and customers from Boulevard Beaumarchais (Merci, Soeur, APC, Ami, etc.) who enter the Marais through Rue du Pont-aux-Choux and Rue Communes.





Rue de Turenne, historically known as the street of wholesalers, has over the years become an iconic and essential part of the "Bretagne - Vieille du Temple - Place des Vosges" area, at the heart of the Marais.

Its north-south axis, running between Rue de Bretagne and Place des Vosges, connects the Marais to the Upper Marais. With its galleries (Galerie Perrotin, Galerie Franck Elbaz, etc.), showrooms, pop-ups, and home decor stores (including Cassina, Farrow & Ball), as well as cafés and restaurants (Le Progrès, Le Marie-Céleste), it has become a key thoroughfare, constantly evolving and attracting a significant clientele.

This street serves as a major flow point for local regulars, weekend strollers, and an international clientele who frequent the area.



SURFACE & CAPACITY

Ground floor: 60 sq. m

Capacity: 33 people

Ceiling height: Approximately 3.6 meters

First floor: 65 sq. m

Capacity: 16 people

Ceiling height: Approximately 3.4 meters

Basement: 20 sq. m

Storage with shelving

Ceiling height: Approximately 3.4 meters

Facade and Display Windows :

Facade length (Rue de Turenne side): 8 meters

Facade length (Rue de Poitou side): 8 meters

Total Capacity:

Maximum capacity: 49 people

ERP Category 5, M-type activity



TECHNICAL EQUIPMENT

Professional lighting :
30 directional spotlights

Equipped kitchenette :
Refrigerator, dishwasher, Nespresso coffee
machine, kettle

Picture rails for hanging artwork

Intrusion alarm system

Reversible air conditioning

Wi-Fi connection

Restroom























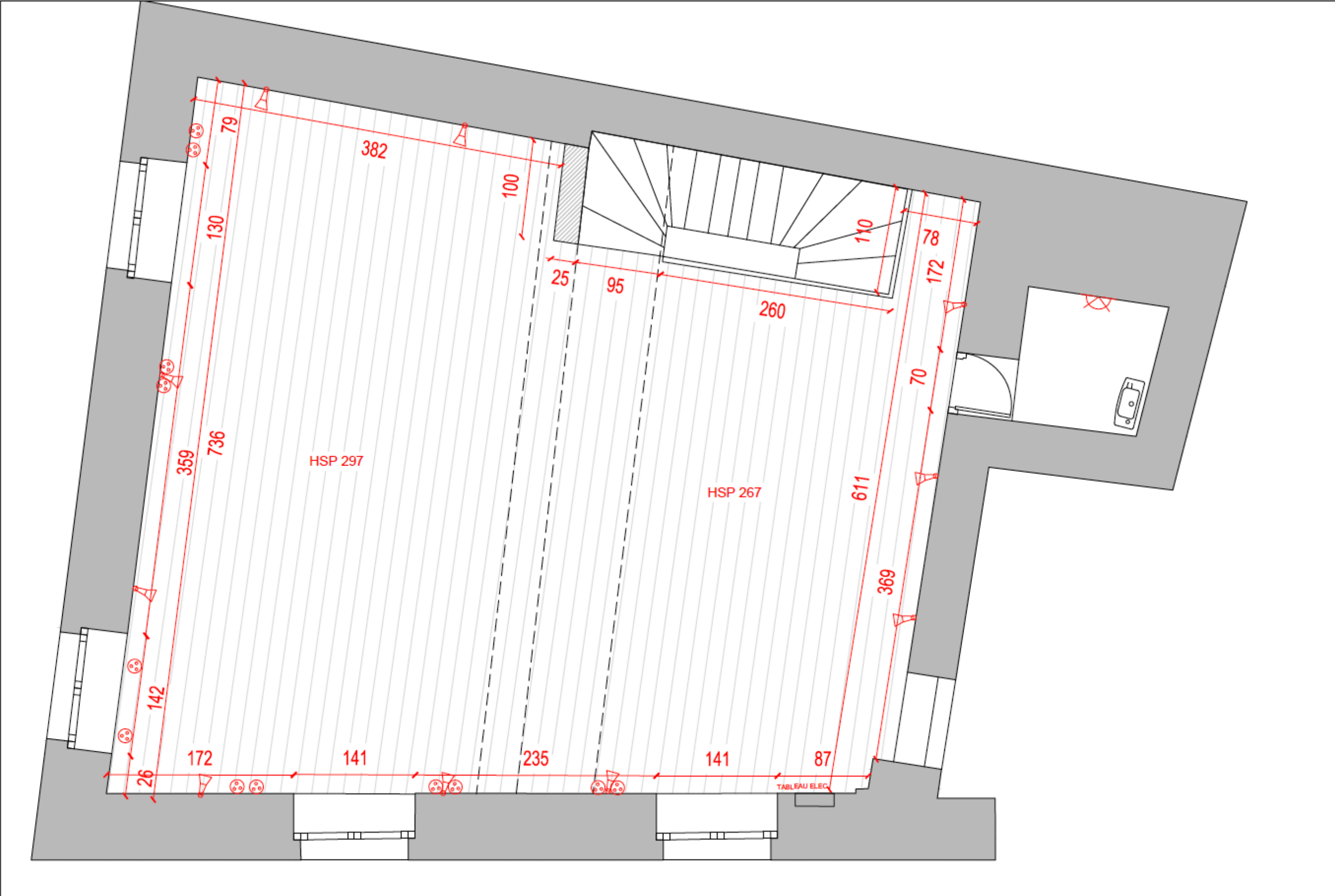


PLAN RDC

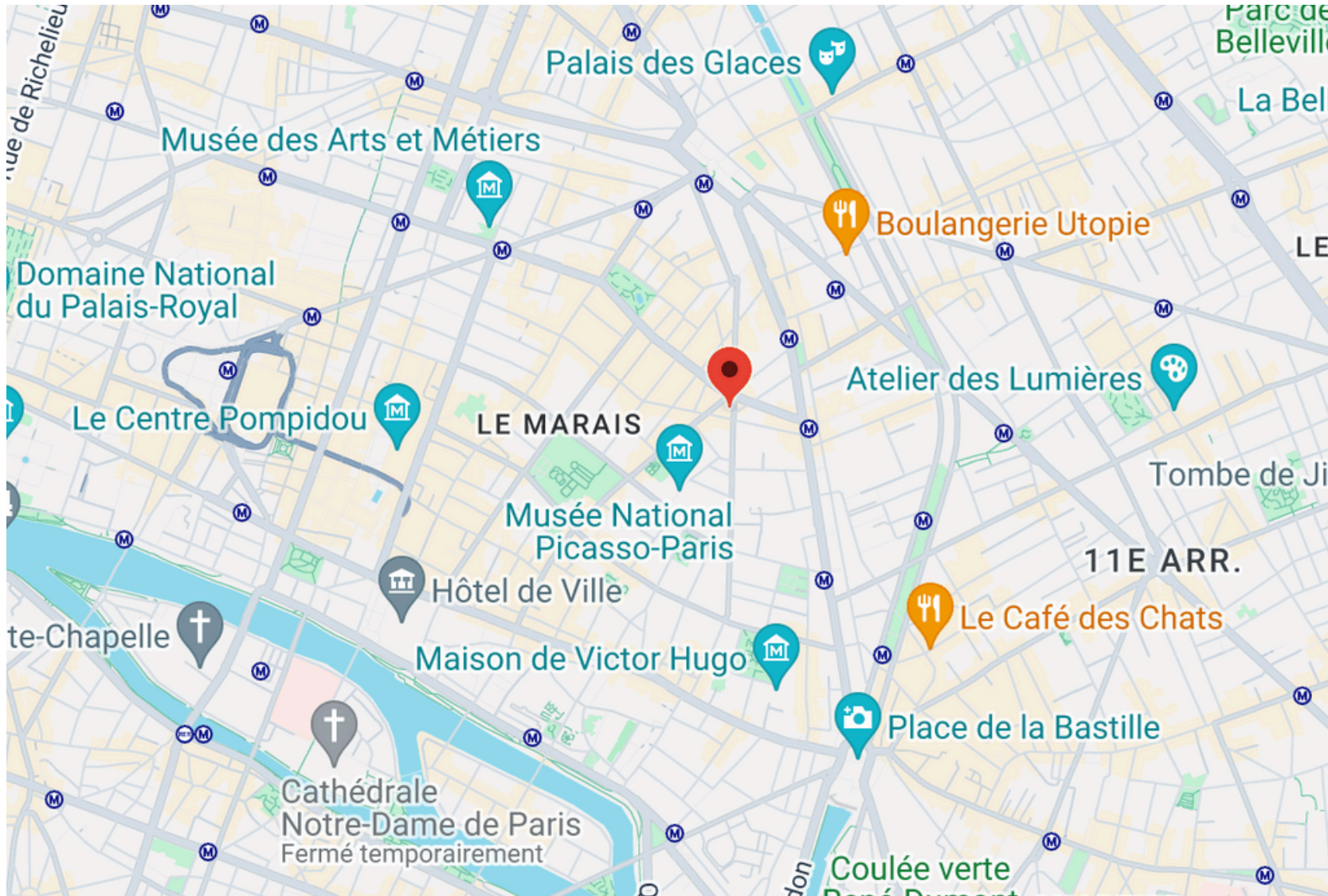


PLAN BOUTIQUE - RDC - 97 rue de Turenne - 75003 PARIS

PLAN 1ER ÉTAGE



Location in Paris



Neighborhood Map





Métro : Filles du Calvaire (ligne 8) - Oberkampf (Lignes 5-9)



Bus : N°29 « Rue Vieille du Temple - Saint-Gilles » - N°96 « Turenne - Saint-Gilles »



Parking : 14 rue de Bretagne, 75003 Paris



Velib : N° 3005 « Rue de Turenne »

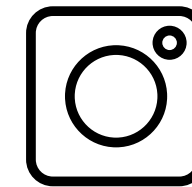


CONTACT US

Christine Muller : +33 6 14 95 72 30
christine@lesshowroomsdumarais.com

Alaric Eleb : +33 6 16 12 38 40
alaric@lesshowroomsdumarais.com

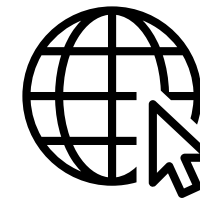
JOIN US



[@lesshowroomsdumarais](https://www.instagram.com/lesshowroomsdumarais)



[Les Showrooms du Marais](https://www.linkedin.com/company/les-showrooms-du-marais)



[lesshowroomsdumarais.com](https://www.lesshowroomsdumarais.com)